

pdfToolbox Server

Manual

callas pdfToolbox Server – Manual – Last modified: 03 May 2011

© 2009-2011 by callas software gmbh, Berlin, Germany
All rights reserved

All trademarks are the property of their respective owners.

Content

callas pdfToolbox Server	4
Overview	4
Installation	4
Program Start	4
Activation	4
General	7
Setting up of callas pdfToolbox Server	8
Job name	9
Processing mode	9
In folder	9
Folder Setup	10
Profile	12
Report for Error and Warning vs. Report for Success and Info	13
Report language	13
Action	13
Additional parameters	14
Switching from callas pdfToolbox Server 3	14
pdfInspektor/pdfCorrect	14
pdfColorConvert	14
Available Actions	15
Processing	19
Usage within Enfocus Switch	20
pdfToolbox 5 ConvertColors	20
pdfToolbox 5 Impose	21
Use of old style configuration folders	22
Preprocessing	22
Processing folders	23
pdfToolbox 5 Actions	23
pdfToolbox 5 Profiles	23
Embed XML report as metadata	24
"Uncompress images"	25
Dynamic profiles	25
pdfToolbox 5 Compare	25
More Information	26
Performance	26

callas pdfToolbox Server

Overview

callas pdfToolbox Server is a stand alone application that allows to run pdfToolbox CLI and the callas DeviceLink Add-on in a hotfolder environment or batch process. It is available on Windows and Macintosh platforms.

Installation

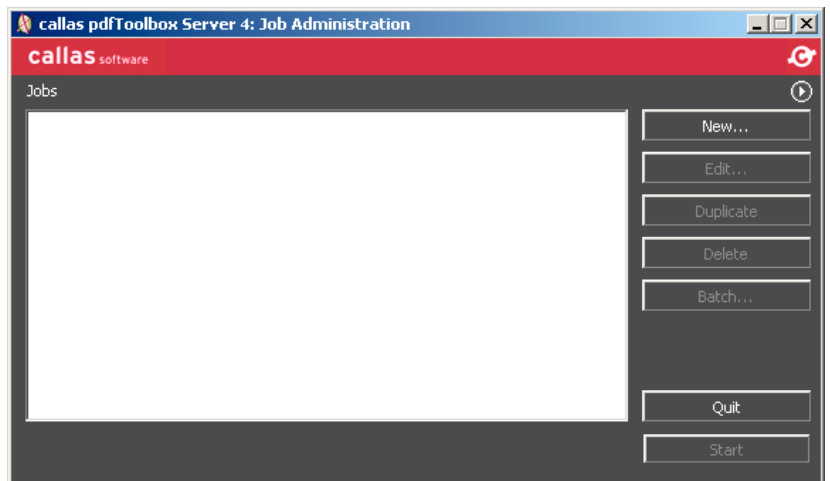
The callas pdfToolbox Server installation program guides you through the installation process. It sets up callas pdfToolbox Server on your hard disc including the modules pdfToolbox CLI and the callas DeviceLink Add-on.

Program Start

If you chose to create a desktop icon, you will find the following after the installation is finished:



When starting callas pdfToolbox Server optionally sample jobs can be installed. Afterwards the Job Administration dialog is displayed:



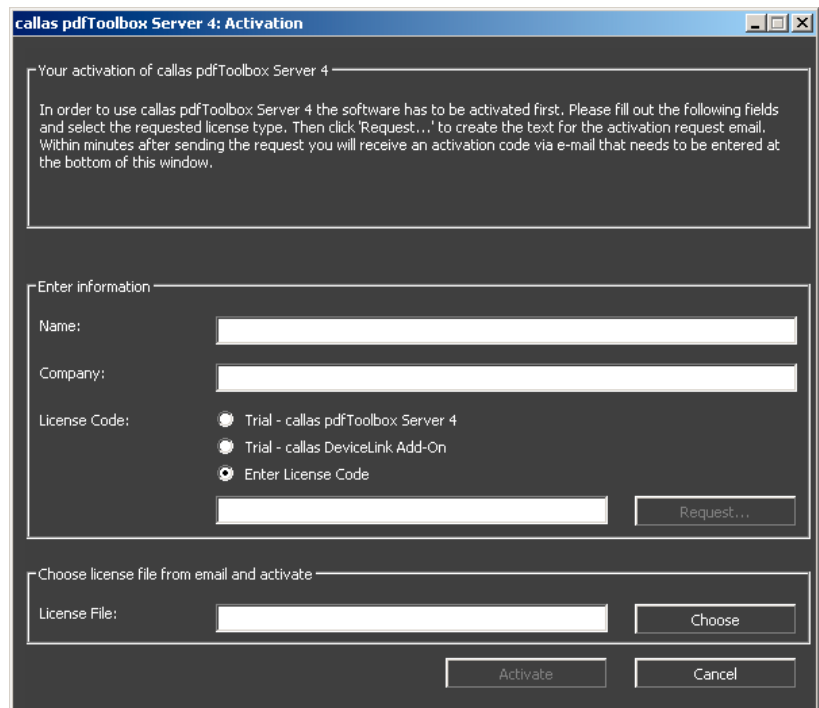
Activation

In order to use pdfToolbox Server the software has to be activated. From the flyout menu in the upper right corner please choose "About...".

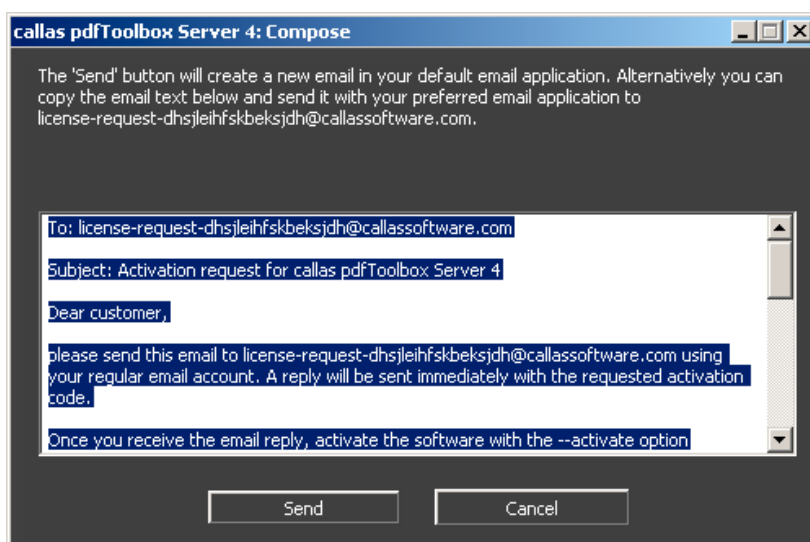


The "About" dialog is opened, where you get version information of callas pdfToolbox Server and the installed module as well as the possibility to activate callas pdfToolbox Server if not already done.

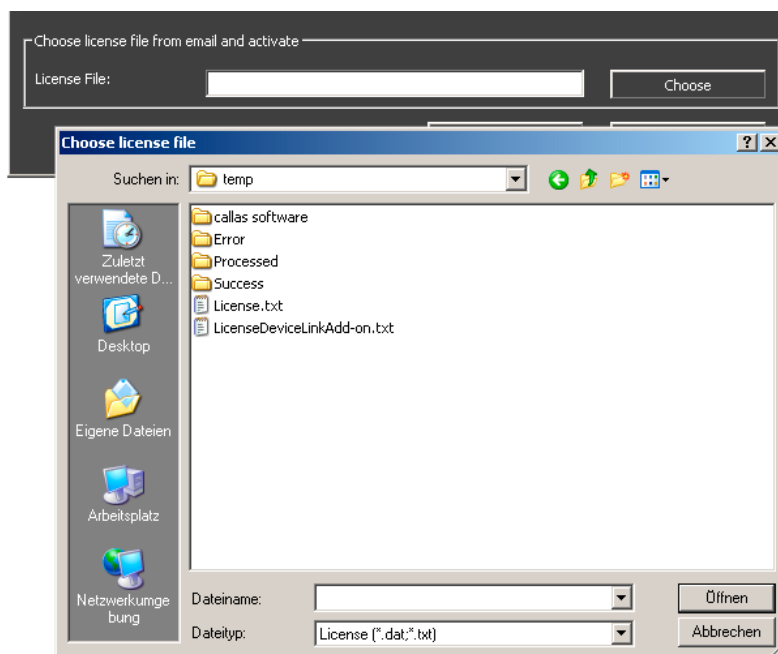
Click on the "Activate" button to open the activation dialog and enter your license information in order to request either a full or trial activation code.





As soon as all necessary information is available, the "Request..." button will create an E-Mail text which can either be copied or send directly via your default E-Mail application by clicking "Send". You will receive a reply with a license file which is needed for activation.



Alternatively you can choose an already present license file for activation in the lower part of the "Activation" dialog.



-  In order to activate pdfToolbox Server for all user accounts of one machine, the license file can be moved from the user folder of the user who has performed the activation to one of the following locations:
 Macintosh: /Library/Preferences/callas software/callas pdfToolbox CLI 5
 Windows: <All Users user preferences folder>\Application data\callas software\callas pdfToolbox CLI 5
 All platforms: <callas pdfToolbox Server installation directory>\cli
-  **Please note:** The callas DeviceLink Add-on is a purchaseable option to perform DeviceLink conversions based on supplied profiles. pdfToolbox Server can be used without restrictions even if you have not entered a valid license code for the DeviceLink Add-on.

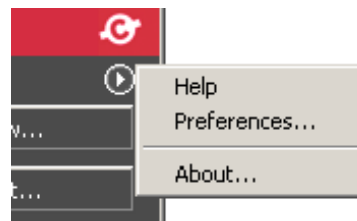
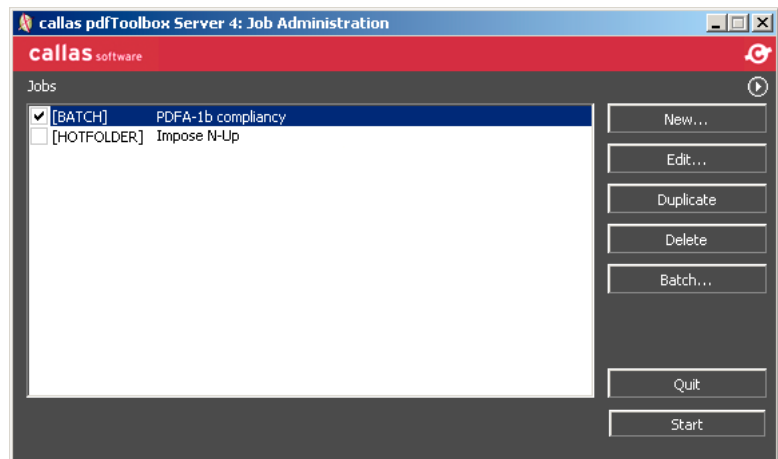
General

In the job administration dialog the "Start" button allows to start the processing. "Quit" closes callas pdfToolbox Server.

Further options in the job administration dialog are "New" to set up a new job (see section "Setting up of callas pdfToolbox Server"), "Edit..." to edit existing jobs, "Duplicate" to create a duplicate of the selected job and "Delete" to remove the selected job.

The Button "Batch..." will create a duplicate of the currently selected job pre-configured for batch processing (see section "Processing mode").

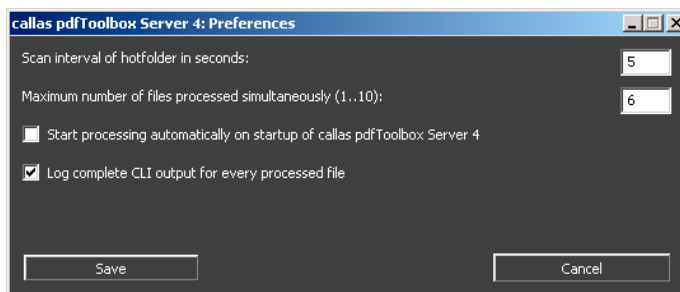
A checkbox in front of each job name allows to activate and deactivate a job. The folders of deactivated jobs are not watched during processing.



The arrow in the upper right corner opens a flyout menu with general options.

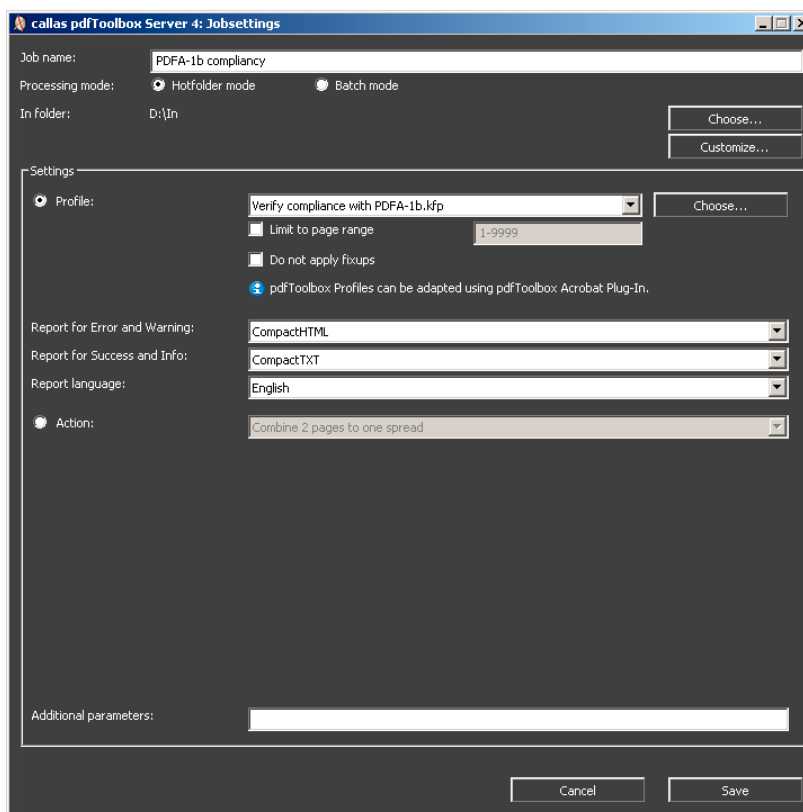
Clicking on "Help" shows the callas pdfToolbox Server manual.

When you click on "Preferences..." a dialog is opened where you can define the general settings for working with pdfToolbox Server.



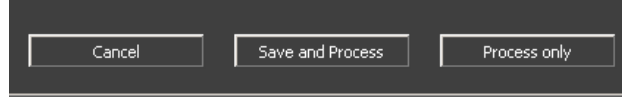
Setting up of callas pdfToolbox Server

To set up a new job click on the "New..." button in the job administration dialog.



As soon as the chosen settings and folders are valid the "Save" button is enabled and you can save the new job. "Cancel" aborts the job creation. If you entered this dialog via the "Batch..." button in the job administration dialog, all settings will be adopted from the selected job and the folder setup will be set to the default batch configuration (see "Processing mode").

The buttons at the bottom will be slightly different:



You can abort the Batch job, save and process it or only process it.

Job name

Enter a unique name that helps you identify the purpose of the job.

Processing mode

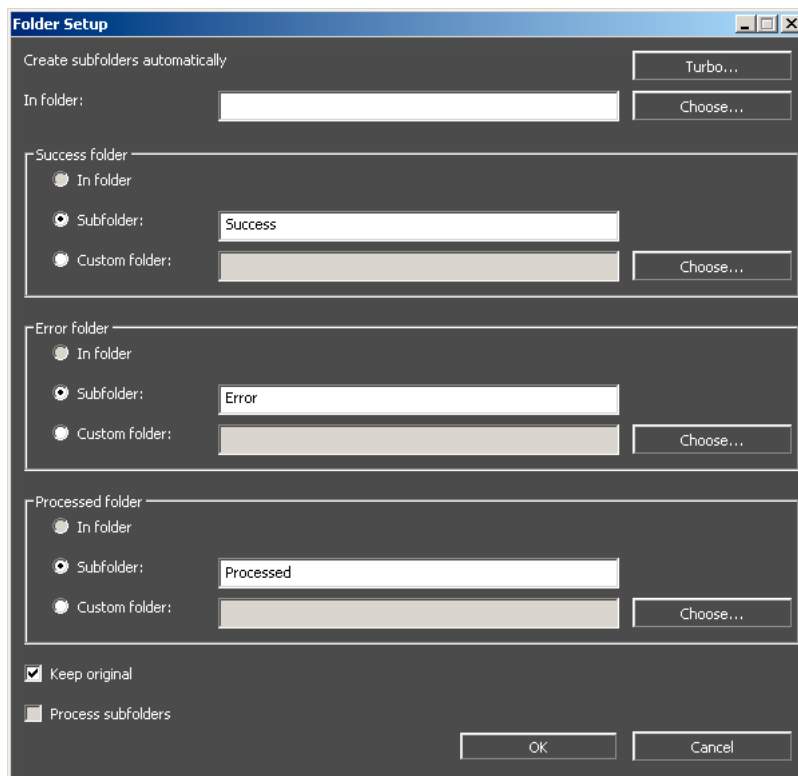
You can either choose to setup a job in hotfolder or in batch mode. For both processing modes you can define "In", "Success", "Processed" and "Error" folder. The "In" folder must already exist for batch mode, but all other folders will be created if they are missing. For more details see "Folder setup".

In folder

Displays the currently set "In" folder (see "Folder setup").

- For conversions from other file formats to PDF check the following website for supported file types and setup procedures:
<http://www.callassoftware.com/callas/doku.php/en:support:faqs:topdf>
If you want to change the folders, either select the "In" folder via "Choose..." or simply click on the "Customize..." button to open the folder setup.

Folder Setup



The "Turbo" button allows to simply choose the parent folder in which all folders are automatically created.

The following table gives you an overview of the folder setup and the restrictions and behaviors of both processing modes.

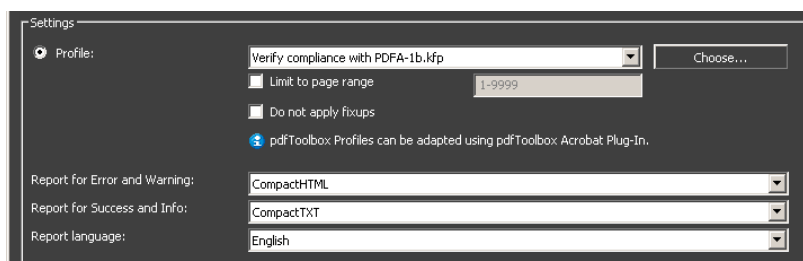
	Batch	Hotfolder
"In" folder	All files that are placed in the "In" folder at the start of the job will be processed, files that are added during processing are ignored.	The "In" folder will be scanned permanently and newly added files will be appended to the processing queue. The scan interval can be set in the preferences.
Default folder setup (setting the "In" folder via "Choose...")	All other folders are automatically set to the "In" folder and original files will be saved and extended with a "_org" suffix within the "In" folder.	All other folders are created as subfolders of the "In" folder and processing of subfolders is disabled.

	Batch	Hotfolder
"Success" folder	<p>Preflight: The original file will be moved to the "Success" folder, if the preflighting led to no hits or hits of severity "Info".</p> <p>Correction/Conversion: The created output file will be moved to the "Success" folder if there were no errors during conversion and all corrections could be applied without problems.</p> <p>Reports: will get stored here when preflighting led to no hits or hits of severity "Info".</p>	<p>Preflight: The original file will be moved to the "Success" folder, if the preflighting led to no hits or hits of severity "Info".</p> <p>Correction/Conversion: The created output file will be moved to the "Success" folder if there were no errors during conversion and all corrections could be applied without problems.</p> <p>Reports: will get stored here when preflighting led to no hits or hits of severity "Info".</p>
"Error" folder	<p>Preflight: The original file will be moved to the "Error" folder, if the preflighting led to hits of severity "Warning" or "Error".</p> <p>Correction/Conversion: If an output file was created it will be moved to the "Error" folder if there were any errors during conversion or if any correction could not be applied.</p> <p>Reports: will get stored here when preflighting led to hits of severity "Warning" or "Error".</p>	<p>Preflight: The original file will be moved to the "Error" folder, if the preflighting led to hits of severity "Warning" or "Error".</p> <p>Correction/Conversion: If an output file was created it will be moved to the "Error" folder if there were any errors during conversion or if any correction could not be applied.</p> <p>Reports: will get stored here when preflighting led to hits of severity "Warning" or "Error".</p>
"Processed" folder	<p>Original files will be moved here after processing, if "Keep original" is activated.</p> <p>Log files that contain the complete CLI output for every processed file are stored in the "Processed" folders, if logs are not disabled in the preferences.</p>	<p>Original files will be moved here after processing, if "Keep original" is activated.</p> <p>Log files that contain the complete CLI output for every processed file are stored in the "Processed" folders, if logs are not disabled in the preferences.</p>

	Batch	Hotfolder
In folder	Use same path as for "In" folder.	Not available.
Subfolder	Create a subfolder within the "In" folder. "Process subfolders" will be disabled.	Create a subfolder within the "In" folder. "Process subfolders" will be disabled.
Custom folder	Choose any path from file system.	Choose any path from file system.
Keep original	If a new file was created during the process, the original PDF will be moved to the "Processed" folder. If one of the other folders is set to the same folder as the "Processed" folder, original files will be marked with an "_org" suffix.	Originals will be moved to the "Processed" folder if a new file was created.
Process sub-folders	Only enabled if the option "Subfolder" is not chosen for any of the folders. The subfolder structure will be re-created in the output folders.	Only enabled if the option "Subfolder" is not chosen for any of the folders. The subfolder structure will be re-created in the output folders.

Profile

If you want to set up a job in "Profile" mode you can select the desired pdfToolbox profile for processing from the drop down list. If the profile is not present, you can add it via the "Choose..." button. Profiles can be created or adapted with the pdfToolbox Plug-In for Acrobat and can contain checks as well as corrections to be executed on the PDF files. Profiles are stored as .kfp or .kfpX files.



Report for Error and Warning vs. Report for Success and Info

You can define different report types for successful or erroneous runs. You can choose between the following report types:

- XML
- CompactTXT
- CompactHTML
- Inventory
- PDF with masks (with or without overview page)
- PDF with comments (with or without overview page)
- PDF with layers (with or without overview page)
- PDF with comparison view

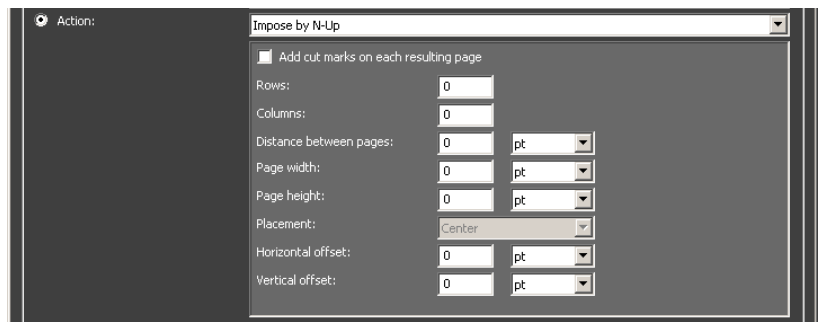
Report language

You can define your desired report language. Currently available are:

- English
- German
- French
- Spanish
- Italian
- Brazilian Portuguese
- Czech
- Danish
- Dutch
- Finnish
- Japanese
- Korean
- Norwegian
- Polish
- Swedish

Action

Instead of setting up or using one of the provided pdfToolbox profiles, common tasks are covered by a set of single actions, that can be easily adapted to your needs.



For more information see "Available Actions".

Additional parameters

To offer you the full flexibility of the CLI with pdfToolbox Server, you can define your own options in the additional parameter text field. These will be added to the command line call that is executed to perform the job according to the settings. Detailed information about available parameters can be found in the callas pdfToolbox CLI manual.

Switching from callas pdfToolbox Server 3

If you are missing the possibilities of pdfToolbox Server 3 – preflighting a file, correcting common mistakes or converting colors – feel reassured, because they are still there:

pdfInspektor/pdfCorrect

Checking a file or correcting mistakes can be fully covered with the Profile section. An unbelievable range of checks and fixups can be combined to perfectly fit into your workflow. Just set up and export the needed profiles in the pdfToolbox Desktop (for more information see “Use of kfx profiles” in the “callas pdfEngine Reference”).

pdfColorConvert

Color conversion can be executed via the Action “Convert colors” or via pdfToolbox profiles for color conversion. When converting via the action, you can choose from the delivered config files to define Source, Destination and Color space (for more information see “Use of color conversion” in the “callas pdfEngine Reference”). Color conversions using DeviceLink profiles or dot gain compensation can be performed using pdfToolbox profiles.

Besides the functionality you know from pdfToolbox Server 3 you will find a lot more options and possibilities.

Available Actions

Action	pdfToolbox CLI command	pdfToolbox Desktop Label	Description
Combine 2 pages to one spread	--readerspreads	Reader Spreads	Prepares a PDF document for double sided printing. The pages are sorted continuously.
Convert Colors	--convertcolors	Process conversion	Prepares the current PDF for the chosen printing condition and carries out the necessary color conversion.
Convert images to PDF	--topdf	Conversion to PDF	Converts JPEG, TIFF and PNG images to PDF.
Convert Office documents to PDF	--topdf	Conversion to PDF	Converts documents from several Office applications to PDF.
Convert PostScript to PDF	--topdf	Conversion to PDF	Converts PostScript and EPS files to PDF.
Create a Passe Partout	--passepartout	Passe Partout	Adds a background border around the current page content.
Create booklet for printing	--booklet	Booklet	Prepares a PDF document for double sided printing, such that the printout can be folded and saddle-stitched.
Create handout from PDF presentation	--handout	Handout	Creates a handout containing several slides on one page and optionally some lines for notes.
Create layers for specific objects	--enumeratelayers	Enumerate Layers	Enumerates the chosen objects on separate layers.
Create PostScript	--createps	PostScript export (Stand-alone only)	Exports the PDF as PostScript.

Action	pdfToolbox CLI command	pdfToolbox Desktop Label	Description
Create single page EPS files	--createeps	EPS export (Standalone only)	Exports the PDF as single page EPS files.
Create single pages from Spread	--splithalf	Split in Half	Splits double pages into single pages. Recognizes whether single and double pages are present, and only splits the double pages, leaving the single pages as they are.
Create Visualizer report	--visualizer	Visualizer	Allows for creating a report visualizing print-relevant characteristics of PDF documents.
Extract content	--extractcontent	Content export	Extracts text, meta-data and link annotations.
Extract ICC Profiles	--extracticcprofiles	Extract ICC Profiles	Saves ICC profiles from the document to the Desktop. Either the Output Intent ICC profile or source profiles can be extracted.
Extract text	--extracttext	Content export	Extracts text from the PDF.
Extract XMP Metadata	--extractxmpmetadata	Browse Metadata	Allows you to review metadata for the whole PDF document as well as metadata associated with images in the PDF.
Import a PDF as a new layer	--importaslayer	Import as Layer	Imports the chosen PDF document as a layer in the active PDF.
Impose based on sheet template and runlist	--impose	Impose	Offers flexible imposition based on imposition templates.

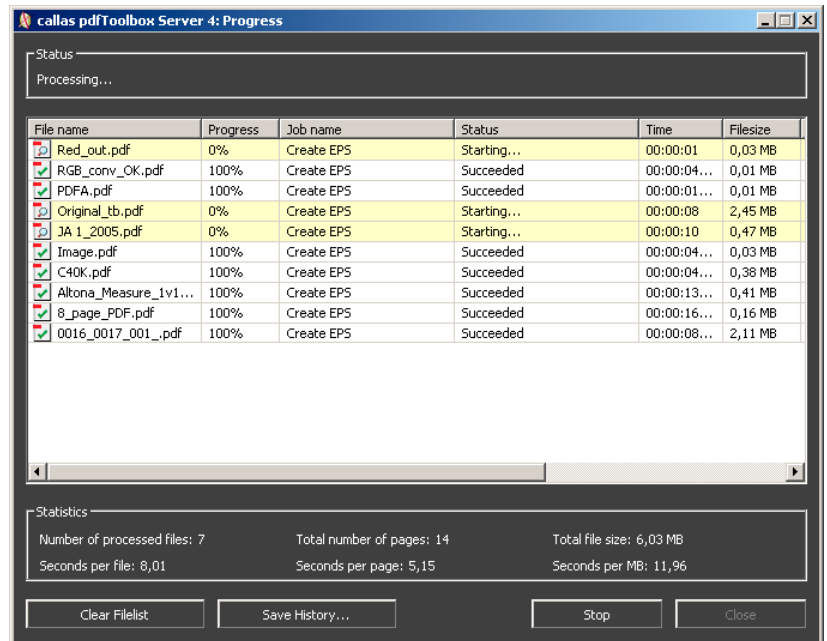
Action	pdfToolbox CLI command	pdfToolbox Desktop Label	Description
Impose by filling up a page	--fillpage	Fill Page	Puts several pages onto a new page with a defined page size. Distributes pages across/down as space permits.
Impose by N-Up	--nup	N-Up	Puts several pages onto a new page.
Impose by Step & Repeat	--steprepeat	Step & Repeat	Puts each page multiple times on a new page.
Optimize PDF	--optimizepdf	Optimize PDF	Rewrites and optimizes the internal structure of the PDF. In addition the PDF is saved for Fast Web View.
Place a PDF	--overlay	Overlay	Places the chosen content on top of the active PDF.
Position pages on a virtual light table	--lighttable	Light Table	Puts several pages on one new page to give the impression of a light table.
Prepare for presentation in Acrobat	--presentation	Presentation	Optimize PDF for use as a slide presentation. Add progress thermometer to each page (except first page).
Re-distill	--redistill	Re-distill	Recreates the PDF via PostScript, prepares for use with older equipment (RIPs).
Remove Preflight Certificate	--uncertify	Via Certify dialog	Removes a Preflight certificate if present.
Save as image	--saveasimg	Image export (Standalone only)	Renders an image per page preserving the page aspect ratio.

Action	pdfToolbox CLI command	pdfToolbox Desktop Label	Description
Slice in 2 files by object type	--slice	Slice	Creates two documents. One containing the chosen objects. The other one contains all other objects.
Split layers	--splitlayers	Split layers	For each layer view (or layer, if no layer views are present) a new file is created with just the content of that layer view (or layer).
Split PDF into segments	--splitpdf	–	Splits multipage documents into smaller packages.

- 🔗 You will find more details on the options of each action in the section "Actions" in the callas pdfToolbox CLI manual.

Processing

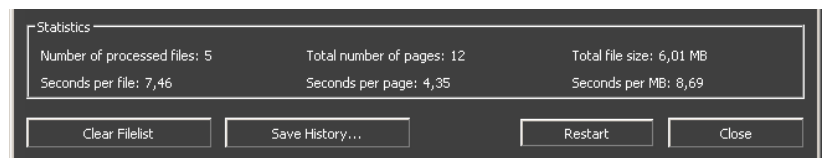
After clicking the "Start" button the progress dialog is opened and the processing is started. As soon as callas pdfToolbox Server finds a PDF file in one of the specified In folders it starts the job and processes the PDF file. The filelist shows useful information for the processed files such as file name, current progress, job name, duration and file size.



Using the "Clear Filelist" button causes all entries in the filelist to be removed. The "Save History..." button allows to create a history file containing all entries of the filelist.

The values listed under "Statistics" give information about the average processing performance.

The "Stop" button at the bottom right allows to stop the processing. It can then be restarted or you can get back to the job administration dialog using the "Close" button.



If you have only batch jobs running, processing will automatically stop when all tasks are finished.

Usage within Enfocus Switch

callas pdfToolbox Server as well as Enfocus Switch as of version 08 (Update 5) or newer are delivered with configurators named pdfToolbox 5 Profiles, pdfToolbox 5 Actions, pdfToolbox 5 Impose, pdfToolbox 5 Convert Colors and pdfToolbox 5 Compare. They appear in Enfocus Switch in the list of configurators under processing.

The Switch configurator checks the version of pdfToolbox Server once a day. If you get an error message, that the selected function requires a newer version of pdfToolbox Server, please right-click on the configurator in the configurator-list and select the menu item "Search for application".

- 🔧 To update existing flows utilizing the new possibilities of the updated configurators, existing flows need to be exported, deleted and re-imported.
- 🔧 Only config files selected via "Choose file" will be included when exporting a Switch flow. Config files that were selected via "Choose from library" need to be present or copied manually to the respective folders of callas pdfToolbox Server.
- 🔧 Since every processing step within Switch involves the copying or moving of a file (depending on the location of the folders), it is generally recommended to use as little processing steps as possible, combining multiple processing steps into one wherever feasible.

pdfToolbox 5 ConvertColors

Easy color conversion by defining a source, destination and spot color configuration like with the action "Process conversion" of callas pdfToolbox Desktop.

You need to define the following settings for a color conversion:

Property	Value
Name	2CMYK_Spot_IsoCoated
Source Color Config	Prepress.cfg
Destination Color C...	CommercialPrintingC...
Spot Color Config	invertToDestination.cfg >

Source color settings

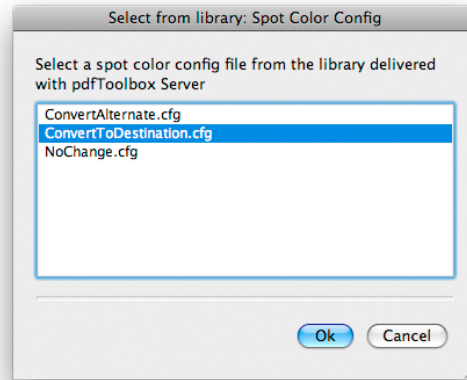
Destination color settings

Spot color settings

The setup of new configuration files is described in chapter "Use of color conversion" in the "callas pdfEngine Reference".

Property	Value
Name	2CMYK_Spot_IsoCoated
Source Color Config	Prepress.cfg
Destination Color C...	CommercialPrintingC...
Spot Color Config	<div style="border: 1px solid gray; padding: 2px;"> Select from library > <ul style="list-style-type: none"> Choose file Define single-line text with variables Define script expression </div>

Choosing the setting "Select from library" will open up a new dialog displaying all configurations present in the following folder:



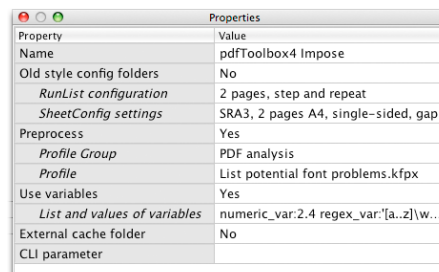
These settings are stored in the installation folder of pdfToolbox Server:

Mac: /Applications/callas pdfToolbox Server 5/cli/var/Actions/ConvertColors

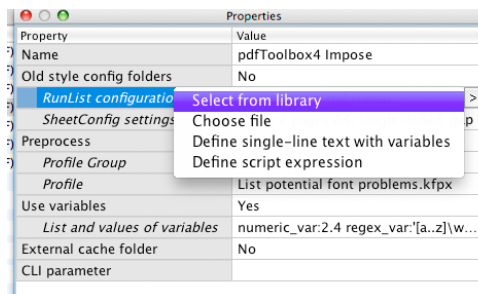
Windows: C:\Programs\callas pdfToolbox Server 5/cli/var/Actions/ConvertColors

pdfToolbox 5 Impose

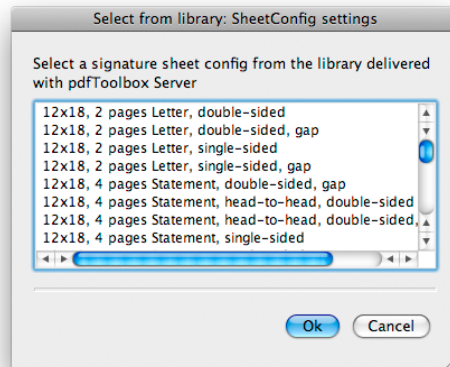
Imposition based on sheet templates and runlists just like the action "Impose" of callas pdfToolbox Desktop.



callas pdfToolbox Server is delivered with a set of predefined sheet templates. The set up of new templates is described in chapter "Use of imposition cfgs" in the callas pdfEngine Reference.



Choosing the setting "Select from library" will open up a new dialog displaying all configurations present in the following folder:



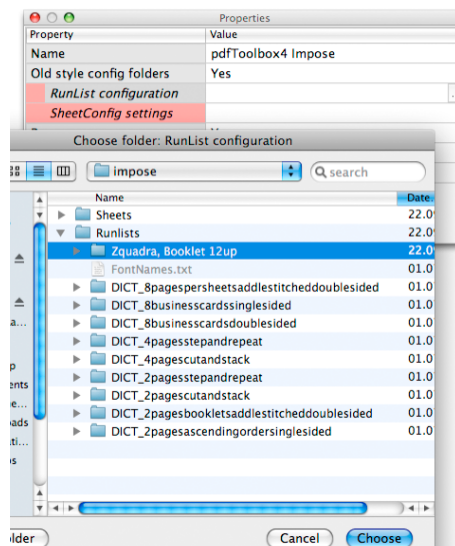
These settings are stored in the installation folder of pdfToolbox Server:

Mac: `/Applications/callas pdfToolbox Server/cli/var/Actions/Impose`

Windows: `C:\Programs\callas pdfToolbox Server\cli\var\Actions\Impose`

Use of old style configuration folders

With pdfToolbox 4.4 the old style configuration folders have been replaced by configuration files. For backwards compatibility, it is still possible to choose an old style configuration folder. To do this, activate the option "Old style config folders" and choose your configuration folders.



Preprocessing

To speed up the overall process, this configurator allows to perform a PDF conversion based on .kfx profiles to be performed prior to imposition. To activate the preprocessing step, activate the option "Preprocess" and select your desired profile as explained in the "pdfToolbox 5 Profiles" configurator.

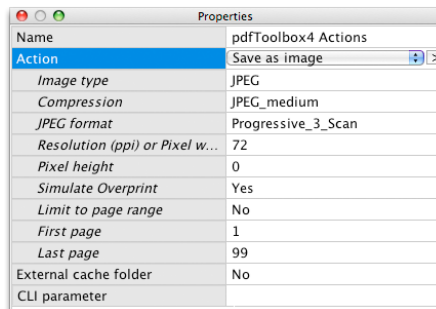
- ⚠ This configurator does not support the generation of reports when performing checks using the .kfx profile.

Processing folders

This Switch configurator supports folders in addition to single PDF files. If a folder is passed to this configurator all PDF files inside this folder are merged prior to imposition.

- ⚠ **Important:** Preprocessing is omitted when working with folders.

pdfToolbox 5 Actions

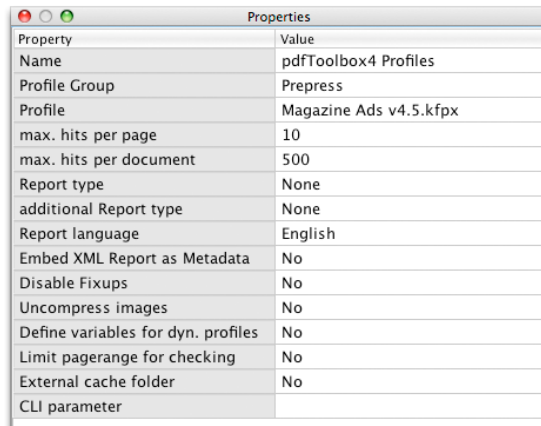


Properties	
Name	pdfToolbox4 Actions
Action	Save as image
Image type	JPEG
Compression	JPEG_medium
JPEG format	Progressive_3_Scan
Resolution (ppi) or Pixel w...	72
Pixel height	0
Simulate Overprint	Yes
Limit to page range	No
First page	1
Last page	99
External cache folder	No
CLI parameter	

This configurator contains several predefined actions, like creating EPS or image files from the pages of your PDF.

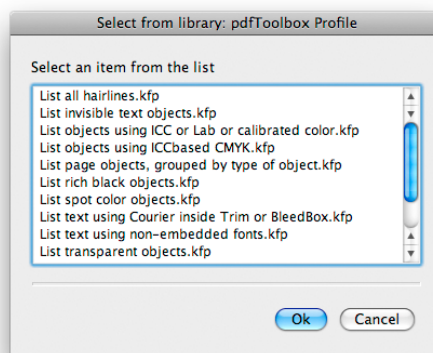
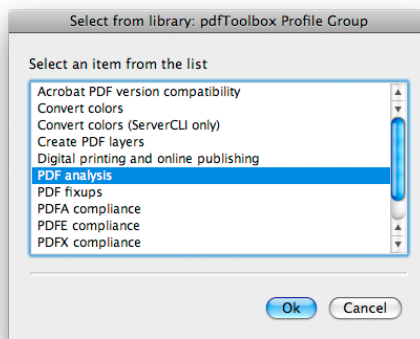
pdfToolbox 5 Profiles

This configurator allows to check and/or modify PDF files using pdfToolbox profiles. These can be created and/or adapted with the pdfToolbox Desktop version (see "callas pdfEngine Reference", section "Use of kfx profiles").



Properties	
Property	Value
Name	pdfToolbox4 Profiles
Profile Group	Prepress
Profile	Magazine Ads v4.5.kfx
max. hits per page	10
max. hits per document	500
Report type	None
additional Report type	None
Report language	English
Embed XML Report as Metadata	No
Disable Fixups	No
Uncompress images	No
Define variables for dyn. profiles	No
Limit pagerange for checking	No
External cache folder	No
CLI parameter	

If selecting a profile via "Choose from library", it is necessary to select a profile group first. Only profiles available in the respective profile group will be listed.



If "pdfToolbox 5 Profiles" does not create a preflight report, then stdout of the pdfToolbox process is sent to the log connection.

If "pdfToolbox 5 Profiles" creates a new file, this is sent to the outgoing connection. Otherwise, the original file gets passed along. The last case usually happens if the pdfToolbox profile only contains preflighting instructions, no fixes were necessary or the option "Disable Fixups" was selected.

Embed XML report as metadata

The XML pickup attaches an XML report as external XML metadata to the processed PDF. The name of the data set is defined in the field "Dataset name". To query the XML dataset, make sure to initialize a name space identifier or use the default name space identifier "default_switch_ns".

Example

To get the number of page in a document, the XPath can be defined in 2 ways:

absolute: `"count(/default_switch_ns:report/default_switch_ns:document/default_switch_ns:pages/default_switch_ns:pages)"`
 relative: `"count(/default_switch_ns:pages)"`

“Uncompress images”

By selecting this option, you force the preflight engine to also analyze images when calculating the number of separations or when checking if a specific colorant was used. For this process, the images have to be decompressed in memory which leads to a higher processing time and memory consumption. By default, this option is turned off.

Dynamic profiles

If using pdfToolbox profiles that make use of dynamic profiles (see section “Use of kfx profiles” in the callas pdfEngine Reference), the variables and the respective values can be entered in the multi-text field list.

Each variable must be entered as

```
<variable_name>:<value>
```

Each variable has to be entered as separate line.

Example (to be used with pdfToolbox profile “List relevant printing aspects”)

```
bitmapresolution:600
imageresolution:300
inkcoverfill:305
inkcoverimageInk:305
inkcoverstroke:305
linewidth:0.124
spotcolorcount:3
testsize:12
inkcoverimageonoff:0
spotcoloronoff:0
```

pdfToolbox 5 Compare

This configurator allows for comparing PDF documents. Therefore the configurator expects two input PDF files within a subfolder in the In folder. pdfToolbox compares both PDF documents and creates a report.

More Information

If you have any questions or feedback please contact the Product Management at callas software at support@callassoftware.com.

- **Please note:** We provide end user support in English language. In case you need a different language consult our *reseller list* at www.callassoftware.com.

Performance

If you want to enhance the performance of your pdfToolbox Server workflow, please keep in mind the following rules:

- For analysis, you can limit processing to a certain page range ("Limit to page range").
- Rather remove fixups from a profile only intended for analysis than using `--nofixups` (e.g. when using `--nofixups`, initialization of ICC profiles for color conversion fixups still takes place).
- If you are using any font embedding fixups, your system font folder will be scanned unless defined otherwise in the fixup configuration. pdfToolbox will create a font cache to improve the performance time, but still it might be useful to remove fonts that are not needed from this directory.
- Creation of reports takes extra time and therefore should only be chosen if needed.
- Deactivate all jobs which are currently not needed.
- Creation of reports takes additional time – even if a profile contains only fixups, an analysis will be executed for gathering report information.